



# Grey County WOODLOT Association ...ON THE LEADING EDGE

## WHAT'S INSIDE?

- 1 CHAIR
- 2 THIS AND THAT
- 3 BEST TREES + THE ELM
- 4 ENVIRONMENTAL PROTECTION
- 5 FOREST HEALTH UPDATE

## 2005 EXECUTIVE

DOUG VANHEMESSEN, CHAIR  
(519) 794-9966

JIM MCLACHLAN, VICE-CHAIR  
and TREASURER  
(519) 369-5389

ANNE LENNOX BRINDLE  
SECRETARY  
(519) 376-3076, EXT. 232

GORD BLAHUT  
(519) 369-5328

HANS BRANDL  
(519) 534-5300

PAUL COOK  
(519) 369-5718

HANS HESS  
(519) 924-0263

SULO LEHTINEN  
(519) 923-5565

PETER MITCHELL  
(519) 824-4120, EXT. 58329

JIM PENNER  
(519) 364-1255, EXT. 33

BILL ROBERTS  
(519) 794-4839

CARL SADLER  
(519) 376-3076, EXT. 231

KLAAS VANDEBELT  
(519) 599-2261

## CHAIR'S CORNER

Greetings to Summer 2005. I'm happy to bring you my first report for the newsletter as Chair of the Association for 2005.

It's another busy year for us. Our Annual General Meeting in February was well attended and participants were rewarded with an interesting and valuable presentation about Tree Marking Certification by Scott Reid of the Ministry of Natural Resources in Bracebridge.

The annual Grey Bruce Woodlot Conference was a huge success again this year. Approximately 150 people enjoyed a slate of talks ranging from how to deal with nuisance wildlife, to Managed Forest Tax Incentive Program updates, to attracting wildlife to your woodlot, and more. Many displays of interest were on hand and, of course, much pie for dessert after lunch. Many thanks to the usual hard work of the organizers of this always engaging and continually growing event.

The end of February brought the departure, through retirement, of Joe Watson as Coordinator for the Grey County Forest Stewardship Network (MNR). Joe was instrumental in the creation of the Grey County Woodlot Association and the undertaking of many of our events and initiatives. His commitment and enthusiasm for our organization was invaluable. Joe is taking relax and spend time on his

sailboat but you can be sure he will be back to be among us once retirement has "settled in". We are extremely grateful that Sharon Hibma, Ministry of Natural Resources, is happy to continue maintaining our membership database and provide mailing labels, etc. for us.

Another significant change for us is Carl Sadler's exit as Association Treasurer. Carl's able handling of the finances kept the bills timely paid and our membership in order. Carl's not leaving, he's just making some more time for his new role as Grey County's Tree Commissioner.

I'm happy to announce two new Board members for 2005. Klaas Vandebelt, who owns property near Kimberley, and Hans Brandl, who owns a woodlot in stony Keppel, bring new experience and enthusiasm to our group.

We have another slate of fine events this year; check on page 2

For news about these events and for updated news about woodlot issues in general be sure to regularly visit our web site: [www.gcwa.ca](http://www.gcwa.ca).

Happy summer, watch those bugs!



## MFTIP

(MANAGED FOREST TAX INCENTIVE PLAN)

The Provincial Government has made some changes in the administration of the plan but we have been told that these changes will not affect the tax status of plan members. The full nature of these changes will be released in late June or early July.

A little history: Back when the program was first introduced, woodlot owners who participated paid their full taxes and then received a rebate directly from the Provincial Government. Then in about 1998 it was changed so that the qualified woodlot owner paid 25% of the tax and the Government reimbursed the municipality the other 75%. This was done under the "Community Reinvestment Fund", a program much broader than just the MFTIP. But apparently the formula was complex and the reimbursement uneven. This brought about a change this year, effective in 2006 and the program is now called the "Ontario Municipal Partnership Fund". Awareness of this change became public locally when in the May 5, 2005 Sun Times, the Township of Chatsworth reported on it's new budget. Included in this report was the following statement: "As well the province is going to discontinue providing the difference in taxes for managed forests and farm tax rebates. -- With the province no longer putting up the shortfall, the onus will be on the rest of the taxpayers to make up the difference."

This report led to the fear that the MFTIP was perhaps heading for phase out. Assurance has been given that this is not the case and it is suppositively in the forthcoming announcement that the security of the program will be confirmed. It is unsure if this announcement will also clarify the effect on municipal taxes, as alluded in the Chatsworth newspaper report.

Keep your eyes on our website ([www.gcwa.ca](http://www.gcwa.ca)) where we try and keep you up to date when the government announcement is made.



I think that I shall never see,  
a poem as lovely as a tree  
Joyce Kilmer

\$\$\$\$\$\$

## TREASURER'S REPORT

Bank balance, June 17, 2005 --- \$4,176.00

GIC's - two, each \$2000 -- \$4000.00

There are presently 182 members, of which 169 are paying members. For 2005, 124 members are paid up.

## OUR LIBRARY

Don't forget, we have a wonderful library. It's housed at the Conservation Authority in Owen Sound and it doesn't cost you a penny to borrow books - you just have to be sure to return them within a reasonable length of time.

## COMING EVENTS!

We have slate of fine events this year. Thirty or so people enjoyed a late spring hike through the Kinghurst Forest, an Ontario Nature Reserve of old-growth forest - considered one of the best examples in southern Ontario led by Carl Sadler. Look for a notice of the August 19 sawmill tour that will include a stop at Klemmer Lumber near Elmwood. September 17 is the annual barbeque and we'll include a mushroom hike again this year (some of our finds might end up as condiments!). Sometime in mid-October we hope to enjoy an owl-banding demonstration, and, look for news about our regular late fall technical seminar.

## OUR CONTACT INFORMATION

Mail:

Grey County Woodlot Association

PO Box 251

Owen Sound ON N4K 5P3

Phone:

Grey Sauble Conservation Authority

(519) 376 3076

Website:

[www.gcwa.ca](http://www.gcwa.ca)

## HONOUR ROLL OF ONTARIO TREES - - - - - THE TOP TEN TREES

Name	Species	County	Height (m)	Diameter (cm)
COTTONWOOD	POPULUS DELTOIDES	KENT	35.40	265.00
AMERICAN SYCAMORE	PLANTANUS OCCIDENTALIS	LAMBTON	29.90	263.00
EASTERN WHITE PINE	PINUS STROBUS	HALIBURTON	45.10	172.00
SILVER MAPLE	ACER SACCHARINUM	ELGIN	32.40	208.00
BUR OAK	QUERCUS MACROCARPA	BRANT	29.30	212.00
RED OAK	QUERCUS RUBRA	KENT	31.10	194.00
WHITE ELM	ULMUS AMERICANA	ALGOMA	37.50	151.00
WHITE OAK	QUERCUS ALBA	PETERBOROUGH	27.10	191.00
BLACK WALNUT	JUGLANS NIGRA	WENTWORTH	28.50	180.00
BLACK WALNUT	JUGLANS NIGRA	FRONTENAC	27.40	180.00

For all you tree watchers, the Grey County Woodlot Association is establishing it's own list of the largest trees in Grey. Maybe you have one on your property or know of one. Take a look, then send the information to Gord Blahut; he's compiling the list. His email address is: [gblahut@wightman.ca](mailto:gblahut@wightman.ca)

---

### **The Elm Recovery Project**

Dutch elm disease is a fungal disease of elm trees, originally native to Asia. It has been accidentally introduced into America and Europe, where it has devastated native populations of elms which had not had the opportunity to evolve resistance to the disease. The name 'Dutch' refers to the first scientific discovery and study of the disease in the Netherlands.

The causative agent is the fungus *Ophiostoma ulmi*, spread by a bark beetle as the vector for infection. The fungus blocks the water conducting vessels within the tree; the first symptom of infection is usually an upper branch of the tree with leaves starting to wither and yellow in summer, months before the normal autumnal leaf shedding. This progressively spreads to the rest of the tree, with further dieback of branches. Eventually, the roots die, starved of nutrients from the leaves.

Often, not all the roots die: the roots may put up small suckers. These may grow up for some years into small elm trees, but after a decade or so the new trunks become large enough to support the bark beetles, and with their inevitable arrival the fungus returns, and the new tree dies.

Elms were once a very significant component of native forests and a valuable street tree since they can tolerate the harsh urban conditions. The disease first entered western Europe in the early 20th century and made its way to North America on burls sent for the furniture industry in the 1930s

The disease spread rapidly and almost eliminate elm as a forest and street tree by the early 1970s. All Ontario elms; white, red (or, slippery), and rock are susceptible. Fortunately, a number of white elms show resistance or tolerance to the disease. Many of these are the large survivors you often see isolated in fields and along roads in the rural landscape. The Arboretum, University of Guelph, has instituted an Elm Recovery Project, aimed at identifying, propagating, and introducing resistant elms back into the landscape.

Although horticultural release of resistant elms ("Liberty" and "Valley Forge") have taken place in the United States, they represent a small gene pool of clones climatically different from southern Ontario. As well, the disease has been reported in Liberty elm and all of its clones are susceptible. The Arboretum seeks to propagate resistant trees native to Ontario for non-clonal seed production that can eventually restore elm as a common tree.

The Arboretum has identified and collected samples from many apparently resistant trees. These are being propagated and assessed for disease resistance with hopes that by 2018 the first crop of genetically resistant seeds are distributed to commercial nurseries. The grand view is that by the second half of this century there is widespread, natural dispersion of seeds from resistant elm trees.

If you're interested in helping with this program you can contact the Arboretum at 519-824-4120 (ex. 52113) in Guelph, or visit the web site at: [www.uoguelph.ca/arboretum/SpProjects/Elm\\_Recover1.htm](http://www.uoguelph.ca/arboretum/SpProjects/Elm_Recover1.htm)

# ENVIRONMENTAL PROTECTION

## *Environmental protection as a forest management objective*

The environment is defined as “all elements living or inanimate, that affect a living organism”. Protection means “to guard against injury or destruction”. Therefore, protection of the environment means taking measures to prevent or minimize adverse effects on the air, soil and water resources of a site and its plant and animal life. An environmental protection objective may also include measures to mitigate or “make less severe” any damages that occur as a result of forest management operations.

Kinds of environmental damage during a forest management operation The ways in which the environment can be damaged during a forest management operation are many. Forest soils can be very sensitive to compaction, rutting and erosion. Soil compaction occurs when the natural soil structure is damaged or destroyed, and the air space between soil particles is reduced. Rutting results when the pressure on the ground exceeds the weight bearing capacity of the soil; for example, when heavy equipment passes repeatedly over soils, especially those with a high moisture content. Erosion is the accelerated movement of soil materials by the wind, water or gravity. The use of heavy equipment can cause soil compaction and rutting and disrupt the natural flow of water through a site. The removal of trees and other vegetation from moderate to steep slopes can cause erosion.

As well, there are additional sources of damage. Poorly maintained machines may leak oil or fuel which can contaminate the soil, water and vegetation. Forestry equipment may carry seeds of invasive exotic plant species from site to site. Forest workers can impact sites by leaving garbage. Heavy equipment and poor tree felling techniques can scrape or break future crop trees targeted to remain after an operation is completed. Poor management practices such as diameter limit cutting can affect the health of a stand by opening it up too much, resulting in nutrient losses, drying of the soils, sunscald, wind throw, and tree dieback. Heavy equipment can also trample or destroy fragile woodland plants or wildlife species and damage their habitats.



### **Strategies to prevent or minimize environmental damage.**

Pre-planning of forest management operations is crucial to preventing or minimizing environmental damage. Each site should be evaluated for potential environmental damage to identify measures needed to prevent or minimize this kind of damage. Prior to commencing an operation, preventative measures should be laid out in an agreement between the owner and the operator.

Site damage such as rutting, compaction and erosion, can be prevented or minimized by having a well-defined skid trail system and landing area. Where possible, skid trails should follow natural contours of the land and avoid sharp bends. To prevent erosion problems, skid trails should not go up and down steep slopes, especially those with grades > 20 percent. Buffers should be placed around sensitive site features such as springs and poorly drained areas, significant plant communities, and wildlife habitats that need protection. To prevent damage to fish habitat, skid trails should avoid crossing streams. If a stream must be crossed, it should be approached at a right angle where it is relatively narrow and has a rocky bottom.

To prevent the introduction of invasive exotic species, operators should be required to hose down their equipment before entering a site. Landing areas should be located on well-drained soils near access points and kept to a reasonable size. After an operation is completed, landing areas can be seeded down with a native grass mixture which will provide a food source for wildlife.

An important consideration in the planning process is the timing of an operation. Environmental damage can be prevented or minimized by conducting an operation in the winter during frozen periods, especially on wet soils. Damage can also be minimized by shutting operations down during spring thaw conditions or wet periods. Avoiding operations during the spring and early summer (mid-March – end of August) will minimize damage to actively growing trees and nesting wildlife species.

Large, wheeled or tracked skidders have a higher potential for causing compaction and rutting due to their size and weight. In many cases, logging with horses or using smaller equipment such as a four-wheel drive tractor may cause less damage. A winch should be used to pull logs to a main skid trail, instead of driving up to the base of each tree.

## **Environmental Protection** (continued from page 4)

Operators should be trained in proper felling and skidding techniques. Where possible, operators should use "bumper" trees (marked, poor quality trees growing along skid trails that can be used to protect nearby unmarked, high quality trees) to prevent damage to remaining trees. Skidding shorter log lengths (24 feet or less) causes less damage than skidding longer logs or full length trees. As much as possible, trees should be processed in the bush which reduces the amount of nutrient loss.

In conclusion, the measures mentioned above are all considered "good forestry practices" and will protect the environment during forest management operations. Most operators are capable of doing an excellent job. But, careful planning must go hand in hand with careful monitoring, because it is all "for naught" if the operator does

not follow the measures intended to prevent or minimize adverse effects on the environment. Therefore, it is very important to hire a reputable, conscientious and skilled operator and monitor an operation on a regular basis. By doing so, problems can be avoided and damage to the environment can, in fact, be prevented or minimized.

Information sources:

1. Archibald, D.J., W.B. Wiltshire, D.M. Morris, and B.D. Batchelor. 1997. Forest Management Guidelines for the Protection of the Physical Environment. Ontario Ministry of Natural Resources. Queen's Printer for Ontario. Toronto. 42 p.
2. OMNR. 2000. A silvicultural guide to managing southern Ontario forests, Version 1.1. Ontario Ministry of Natural Resources. Queen's Printer for Ontario.

---

# **FOREST HEALTH / PEST UPDATE**

**June 13, 2005**

by Hugh Evans, Canadian Forest Service, (705) 424-5721

SOUTHERN REGION (Aurora and Midhurst OMNR districts)

## **Introduction**

This update on forest health conditions covers the area of the Ontario Ministry of Natural Resources districts of Aurora and Midhurst. These two districts, more or less, cover the counties of Bruce, Grey, Dufferin and Simcoe and the regional municipalities of Halton, Peel, York and Durham. If you have any questions, comments or concerns about information contained within, please contact the author.

## **Weather**

The arrival of spring heralds the end of another long winter. The weather of late has caused some concern. A colder than normal May was followed by very hot and dry conditions in early June. This ended quite dramatically in Barrie on June 9th when 100-150 mm of rain deluged the city in less than two hours. This caused flooding and washouts and the accompanying wind blew down

trees. There was also hail reported but it is not yet known if this resulted in tree damage. Two days later, shortly after the laundry was hung to dry, a thunderstorm and shower hit the village of Angus. A bolt of lightning took out a nearby eastern white pine.



*Salt damage to Basswood*

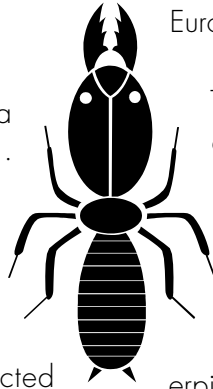
Trees were also damaged during the winter. Low temperatures caused winter kill on the twigs and buds of fruit trees, mostly apricot and peach, in the north end of Toronto. Salt damage to roadside conifers following the winter is nothing new. Damage this spring was not as severe as in some recent years. Although not as dramatic, deciduous trees also suffer damage from road salt. The accumulated effect of years of salt spray combined with the salt in the ground water results in shoots dieback often results in odd branch formation.

### **Pest Surveys**

Although pest surveys are at an early state, a number of pest problems have been detected. One of the harbingers of the new season is the eastern tent caterpillar, *Malacosoma americana* and numbers of this pest of deciduous trees was evident in most localities. This tent caterpillar constructs a tent in the fork of the tree where the caterpillars are sheltered. Many hosts are affected with cherries and apple among the favoured. The Damage is generally confined to forest edge trees and shrubs. The caterpillars at this time are just completing the larval life stage. Another pest that causes webbing is the euonymus webworm, *Yponomeuta euonymella* and there have been several sightings of this pest in southern Ontario. When populations are high the webworm will completely enshroud the host tree or shrub and entirely denude the plant of foliage (Photo 6). The pest appears to be host specific so is confined to the ornamental plantings of euonymus. Some early conifer pests observed include pine needle scale, *Chionaspis pinifoliae* and European pine sawfly, *Neodiprion sertifer*. The scale is a pest of all pines and heavy infestations can cause the needles to brown and drop prematurely. The sawfly as the name implies is an exotic pest and the first record in Ontario was in 1939 in Windsor. It is now established across southern Ontario, It has been a serious problem in Scots pine Christmas tree plantings and there is the threat that natural stands will be attacked. The sawfly feed gregariously in a colony. White pine blister rust, *Cronartium ribicola* is always a concern for anyone growing eastern white pine. This year appears to be particularly bad as there is much evidence of the fungal fruiting. At one location almost half of the trees were infected and adding to the problem was the damage caused by porcupines which dine on the blister rust fruiting bodies and the adjacent bark

In some situations the leaves no sooner developed and they were being defoliated. There were many areas of damage from the maple petiole borer, *Caulocampus acericaulis*. The larvae of this insect feed by tunnelling into the petiole of maple leaves and this results in leaf drop of the affected foliage. Satin moth, *Leucoma salicis* is an early defoliator and there several locations where trees were denuded of leaves in the south part of Simcoe

County. Poplar and willow are the hosts of satin moth. European white poplar is one of the favourite hosts



The pine false webworm, *Acantholyda erythrocephala* has been a persistent pest in some areas. Larvae have just hatched and surveys are underway to determine the level and extent of damage. Others that are on the radar include the spruce budworm, *Choristoneura fumiferana*, gypsy moth, *Lymantria dispar* and forest tent caterpillar, *Malacosoma disstria*. Ones that hopefully are not detected are the emerald ash borer, *Agrilus planipennis* and the Asian longhorned beetle, *Anoplophora glabripennis*.

Up to date information for these exotic pests can be found at the following websites

<http://www.inspection.gc.ca/english/plaveg/protect/pestrava/ashfre/survenqe.shtml>

and

<http://www.inspection.gc.ca/english/plaveg/protect/pestrava/asialong/asialonge.shtml>

Hugh Evans Forest Health

Field season contact number is: 705 424- 5721

[hevans@nrcan.gc.ca](mailto:hevans@nrcan.gc.ca)

[http://www.glfc.forestry.ca/foresthealth/index\\_e.html](http://www.glfc.forestry.ca/foresthealth/index_e.html)

